



# MONTHLY MEMBERSHIP PROGRESS REPORT

District 315A2

Results as of: 06/30/2018

GMT: SWADESH RANJAN SAHA

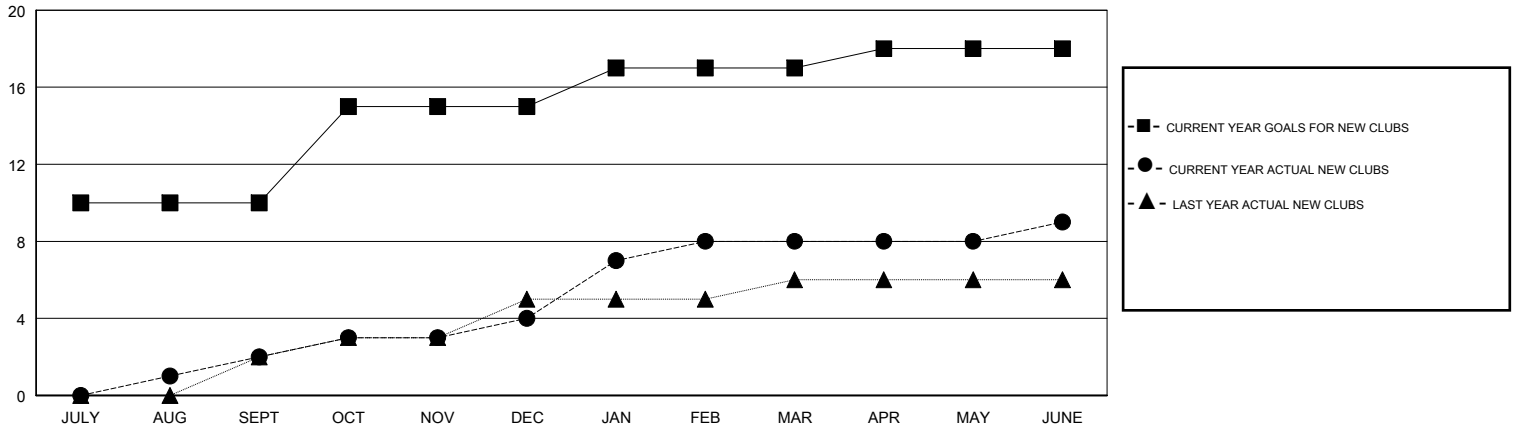
LOCATION REP OF BANGLADESH

GMT CA

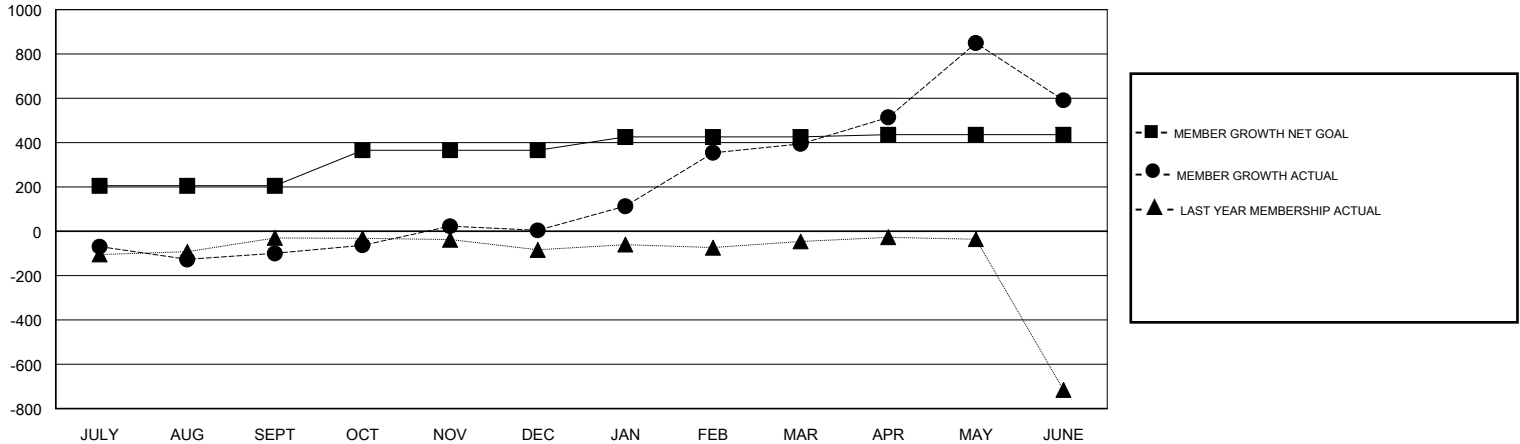
Clubs			
RESULTS FOR 2017-2018			
QUARTER	NEW CLUB GOAL	NEW CLUBS	DROPPED CLUBS
JULY/AUG/SEPT	10	2	2
OCT/NOV/DEC	5	2	1
JAN/FEB/MAR	2	4	1
APR/MAY/JUNE	1	1	4

Members			
RESULTS FOR 2017-2018			
QUARTER	MEMBER GROWTH NET GOAL	MEMBER GROWTH ACTUAL	DROPPED MEMBERS ACTUAL (including transfers)
JULY/AUG/SEPT	205	147	239
OCT/NOV/DEC	160	184	70
JAN/FEB/MAR	60	1,123	269
APR/MAY/JUNE	10	683	459

GOALS AND ACTUAL NEW CLUBS CUMULATIVE



GOALS AND ACTUAL MEMBERS CUMULATIVE



DROPPED CLUBS: 8

102 CLUBS OF 130 ADDED 1 OR MORE NEW MEMBERS

GENDER DISTRIBUTION	
MALE	3,320 (76.87%)
FEMALE	999 (23.13%)
Women Percentage Fiscal Year Goal: 25%	

DROPPED MEMBERS	
DECEASED	6
CLUB CANCELLED	118
OTHER	913
<b>TOTAL</b>	<b>1,037</b>

[CLICK HERE FOR CUMULATIVE MEMBERSHIP DATA](#)

TOTAL FAMILY UNIT MEMBERS	0
FAMILY MEMBERS PAYING HALF DUES	0